

Anti-Enolase-2 Antibody
Mouse Monoclonal Antibody
Catalog # AP53432**Specification**

Anti-Enolase-2 Antibody - Product Information

Application	WB, E
Primary Accession	P09104
Other Accession	NM_001975
Reactivity	Human, Mouse, Rat
Host	Mouse
Clonality	Monoclonal
Isotype	IgG1
Immunogen	Synthetic peptide derived from human NSE.
Purification	Affinity purified
Calculated MW	47kDa kDa

Anti-Enolase-2 Antibody - Additional Information**Gene ID** 2026**Other Names**

2 phospho D glycerate hydrolyase;2-phospho-D-glycerate hydro-lyase;Eno 2;ENO2;ENOG;ENOG_HUMAN;Enolase 2 (gamma, neuronal);Enolase 2;Enolase 2 gamma neuronal;Enolase2;Epididymis secretory protein Li 279;Gamma enolase;Gamma-enolase;HEL S 279;Neural enolase;Neuron specific enolase;Neuron specific gamma enolase;Neuron-specific enolase;Neurone specific enolase;NSE

Dilution

WB~~1:1000
E~~N/A

Format

Liquid in PBS containing 50% glycerol, 0.5% BSA and 0.02% sodium azide, pH 7.3.

Storage

Store at 4°C short term. Aliquot and store at -20°C long term. Avoid freeze/thaw cycles.

Anti-Enolase-2 Antibody - Protein Information**Name** ENO2 ([HGNC:3353](#))**Function**

Enolase that catalyzes the conversion of 2-phosphoglycerate to phosphoenolpyruvate in glycolysis and the reverse reaction in gluconeogenesis (By similarity). Has neurotrophic and neuroprotective properties on a broad spectrum of central nervous system (CNS) neurons. Binds, in a calcium-dependent manner, to cultured neocortical neurons and promotes cell survival (By

similarity).

Cellular Location

Cytoplasm. Cell membrane. Note=Can translocate to the plasma membrane in either the homodimeric (alpha/alpha) or heterodimeric (alpha/gamma) form

Tissue Location

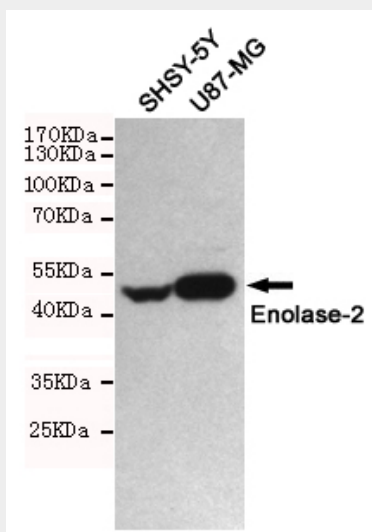
The alpha/alpha homodimer is expressed in embryo and in most adult tissues. The alpha/beta heterodimer and the beta/beta homodimer are found in striated muscle, and the alpha/gamma heterodimer and the gamma/gamma homodimer in neurons

Anti-Enolase-2 Antibody - Protocols

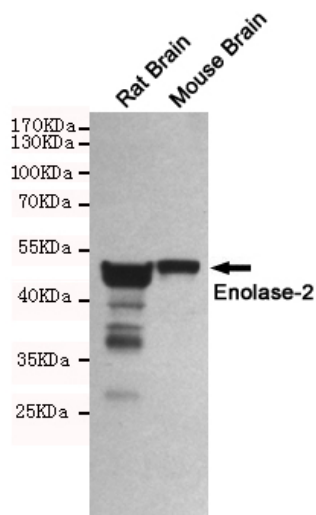
Provided below are standard protocols that you may find useful for product applications.

- [Western Blot](#)
- [Blocking Peptides](#)
- [Dot Blot](#)
- [Immunohistochemistry](#)
- [Immunofluorescence](#)
- [Immunoprecipitation](#)
- [Flow Cytometry](#)
- [Cell Culture](#)

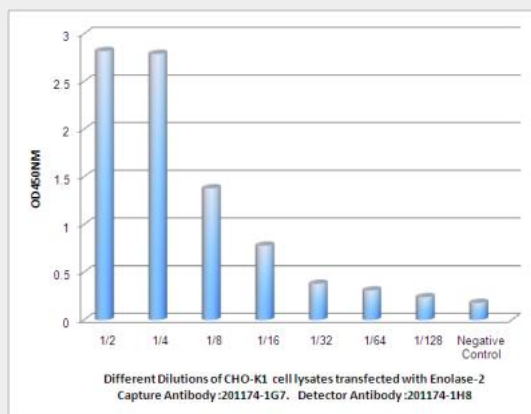
Anti-Enolase-2 Antibody - Images



Western blot detection of Enolase-2 in SHSY-5Y and U87-MG cell lysates using Enolase-2 mouse mAb (1:1000 diluted). Predicted band size: 47KDa. Observed band size: 47KDa.



Western blot detection of Enolase-2 in Rat Brain and Mouse Brain lysates using Enolase-2 mouse mAb (1:1000 diluted). Predicted band size: 47KDa. Observed band size: 47KDa.



Observed Enolase-2 levels in CHO-K1 cell lysates transfected with Enolase-2 at different dilution.

Anti-Enolase-2 Antibody - Background

Has neurotrophic and neuroprotective properties on a broad spectrum of central nervous system (CNS) neurons. Binds, in a calcium-dependent manner, to cultured neocortical neurons and promotes cell survival.